



COURSE GUIDE



Relationships | Integrity | Accountable | Improvement

Acknowledgement of Country

SuniTAFE proudly acknowledges the Latji Latji, Neri Neri, Ngintait, Wamba-Wemba and Barkindji as the Traditional Custodians of the land and waters around Mildura, Robinvale and Swan Hill.

We pay our respects to all Elders past, present and those emerging. We acknowledge the important contribution that First Nation Peoples make in these communities today.

We honour those who continue to protect and promote Aboriginal and Torres Strait Islander Cultures and Country.

Together we educate, cooperate, collaborate and create a future of hope and Reconciliation.



SuniTAFE has been providing high quality vocational education and training in the Loddon Mallee for more than 45 years.

With a focus on the skills that our communities need now and into the future, SuniTAFE ensures that regional and remote communities have access to life-changing educational opportunities close to home.

SuniTAFE Values:

Relationships | **Integrity** | **Accountable** | **Improvement**





Contents

<u>Campuses</u>	5	Nursing, Health and Community Services	32
<u>Courses:</u>		Training and Assessment	36
Horticulture and Construction	6	Senior Secondary	38
Automotive	8	Foundation Studies	40
Construction and Trades	10	FREE TAFE	42
Design and Visual Arts	12	International Courses	43
Business and Accounting	14	Short Courses	44
Early Childhood Education	16	VDSS	45
Engineering	18		
English Language Skills	20	<u>SuniTAFE Library</u>	46
Food and Hospitality	22	<u>Student Support Services</u>	47
Heavy Automotive	24	<u>First Nations Student Support</u>	48
Beauty	28	<u>Skills and Jobs Centres</u>	49
Information Technology	30	<u>Next Steps</u>	50



Campuses



Mildura Campus

453 Benetook Avenue
Mildura, Victoria, 3500

- TAFE Kids Inc
- Skills and Jobs Centre
- Nexus Cafe
- SuniTASTE Restaurant
- Courtyard Cafe
- Dulka Yuppata
(First Nations Cultural Support Centre)
- Library
- Student Support Services



SMART Farm Campus

161 Dairtnunk Avenue
Irymple, Victoria, 3498

The SMART Farm is a state-of-the-art training and research facility that utilises the latest innovations and best practices of digital farming to transform horticulture training.

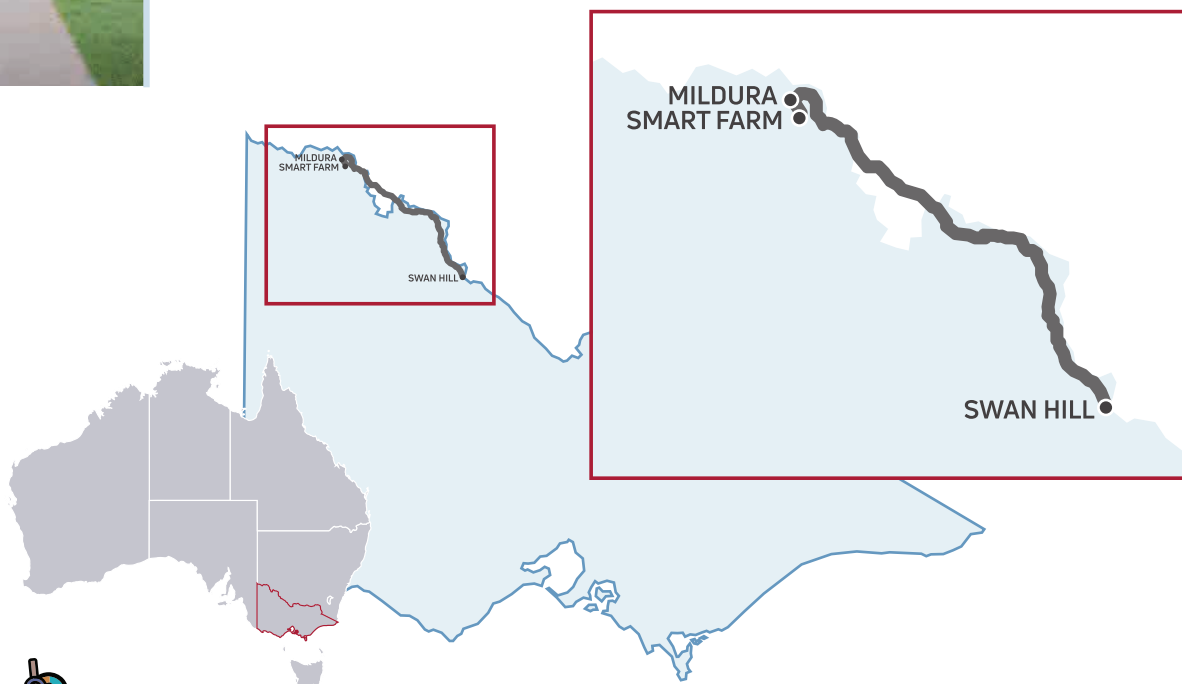
A dedicated hub for SuniTAFE's horticulture and agriculture students, the 30-hectare SMART Farm campus is a commercial farm that doubles as an immersive learning environment.



Swan Hill Campus

64 Sea Lake Swan Hill Road
Swan Hill, Victoria, 3585

- Skills and Jobs Centre
- SuniTAFE Cafe
- Telkaya First
(First Nations Cultural Support Centre)
- Library
- Student Support Services





HORTICULTURE AND CONSERVATION

STUDY AREAS

- Horticulture
- Nursery Operations
- Parks and Gardens
- Conservation and Eco-systems
- Agriculture

With an ever-growing population, meeting the challenges of food security, environmental agendas, green space management, and complex rural issues means there is a high demand for qualified horticultural and conservation specialists.

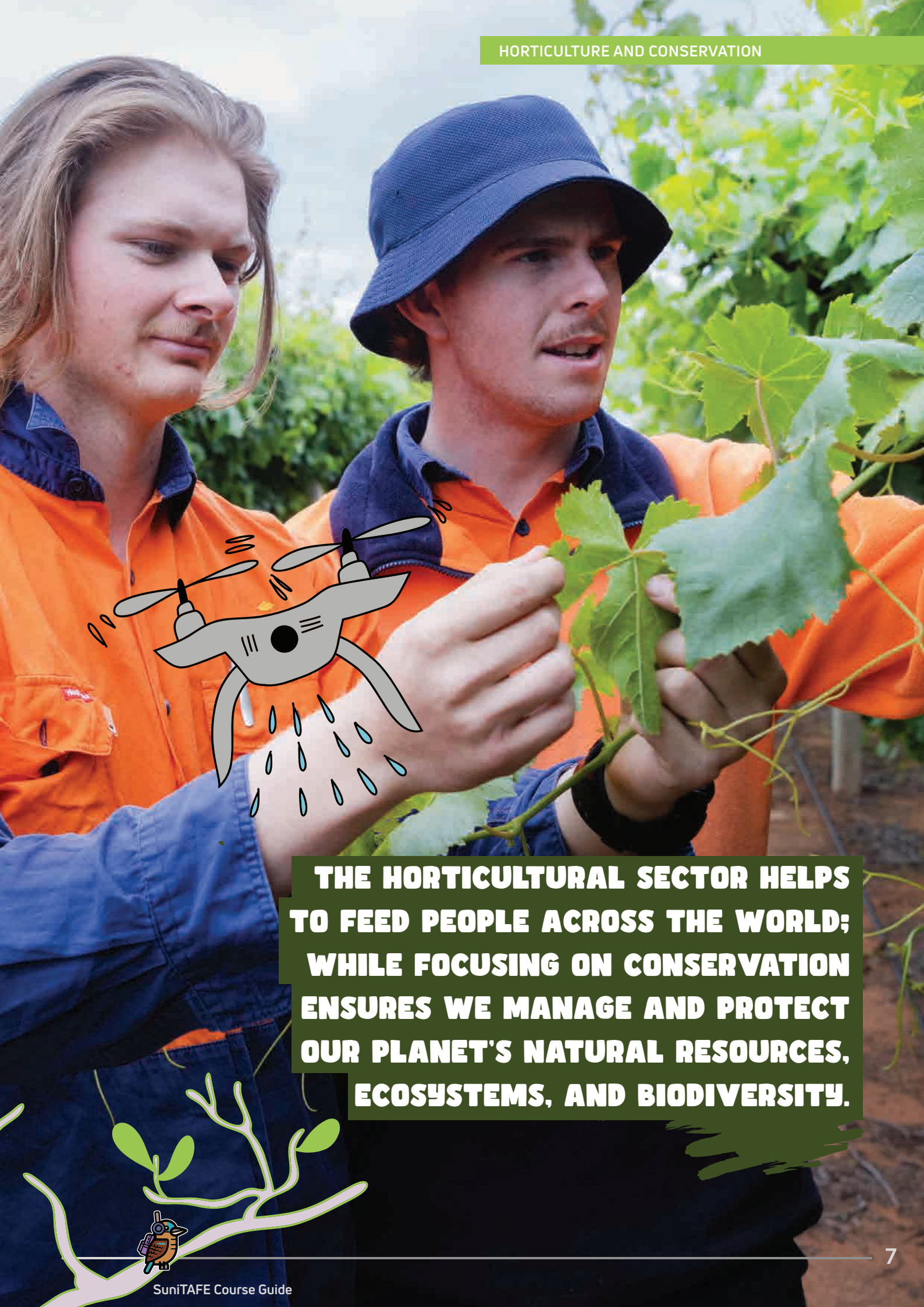
Study everything horticulture and conservation and gain knowledge for a successful career in this thriving sector. At SuniTAFE's SMART Farm in Cardross, you can practise your skills in real environments with the latest technologies and graduate ready to get straight to work or contribute more effectively in your existing workplace.

Our teachers are experts in their fields and will ensure you graduate ready to tackle any horticultural or conservation challenge.

**FREE
TAFE**

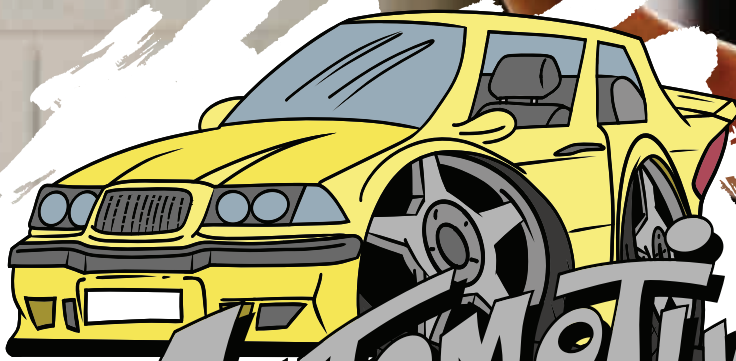
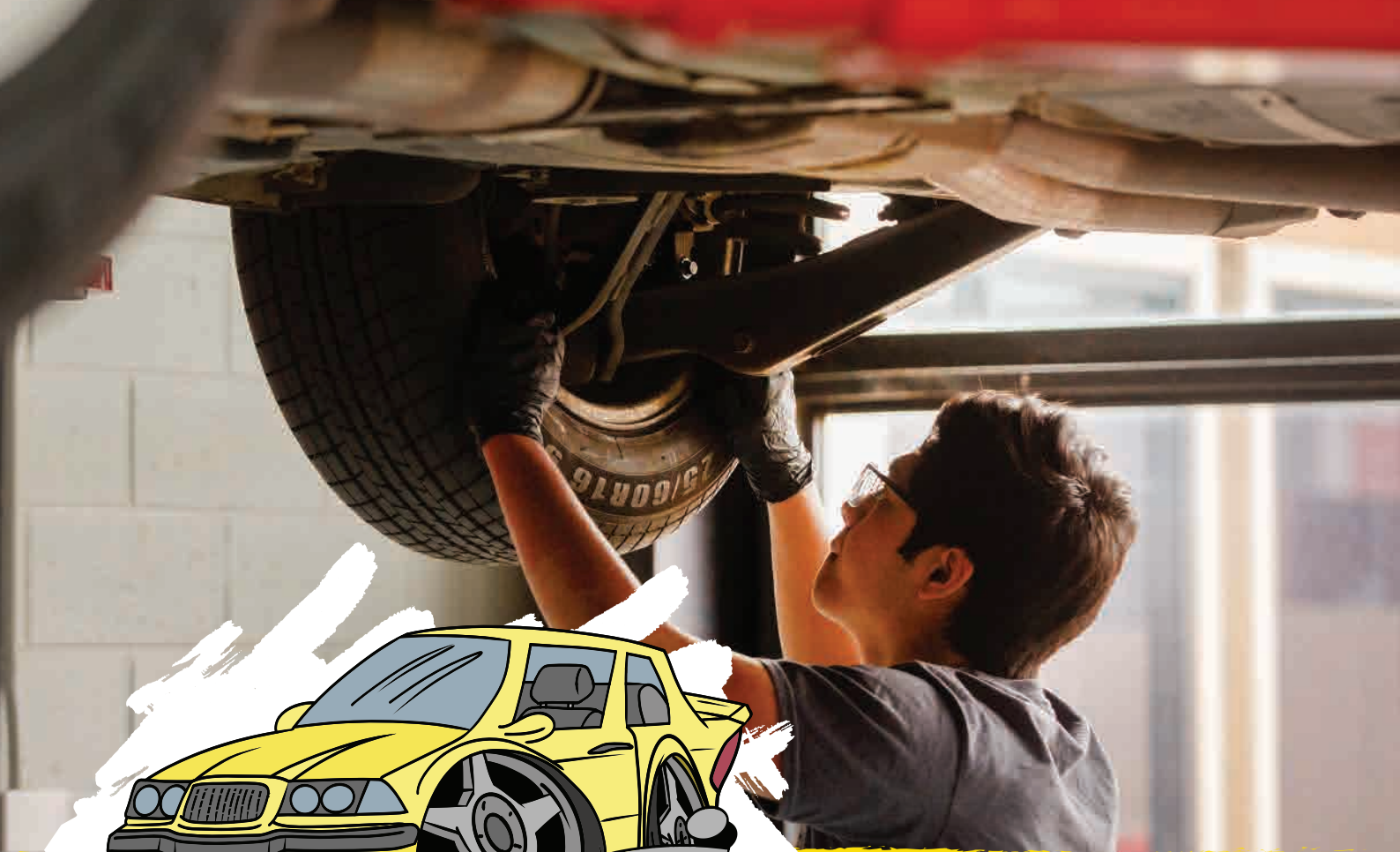
*Courses in this study area may be covered by FREE TAFE. Visit our website to check eligibility.





THE HORTICULTURAL SECTOR HELPS TO FEED PEOPLE ACROSS THE WORLD; WHILE FOCUSING ON CONSERVATION ENSURES WE MANAGE AND PROTECT OUR PLANET'S NATURAL RESOURCES, ECOSYSTEMS, AND BIODIVERSITY.





AUTOMOTIVE

STUDY AREAS

- Automotive Electrical
- Automotive Air Conditioning
- Automotive Sales
- Light Vehicle Mechanical Technology

Learn how to perform a wide range of skills such as testing and diagnosis of mechanical parts or service and repair of motor vehicles, opening opportunities to you across a wide range of industries.

You'll stay up to date with the latest industry trends, like the growing interest in environmentally friendly options such as alternative fuels and hybrid cars, equipping you for the future of the industry.



*Courses in this study area may be covered by FREE TAFE. Visit our website to check eligibility.



**WITH VEHICLE OWNERSHIP
CONTINUING TO INCREASE,
IT'S A GREAT TIME
TO START A CAREER
IN AUTOMOTIVE AND
RELATED TECHNOLOGY.**





CONSTRUCTION & TRADES

Skilled people working in trades are always in high demand and it's one of the biggest employment sectors in the country. Our courses give you hands-on skills to get you job-ready in your chosen trade. You'll learn to build homes or keep the lights on and the water running.

You can gain a qualification as an apprentice or, if you're looking to test out a new trade, we offer pre-apprenticeships. These will give you a great introduction to a trade by teaching you basic knowledge and hands-on skills.

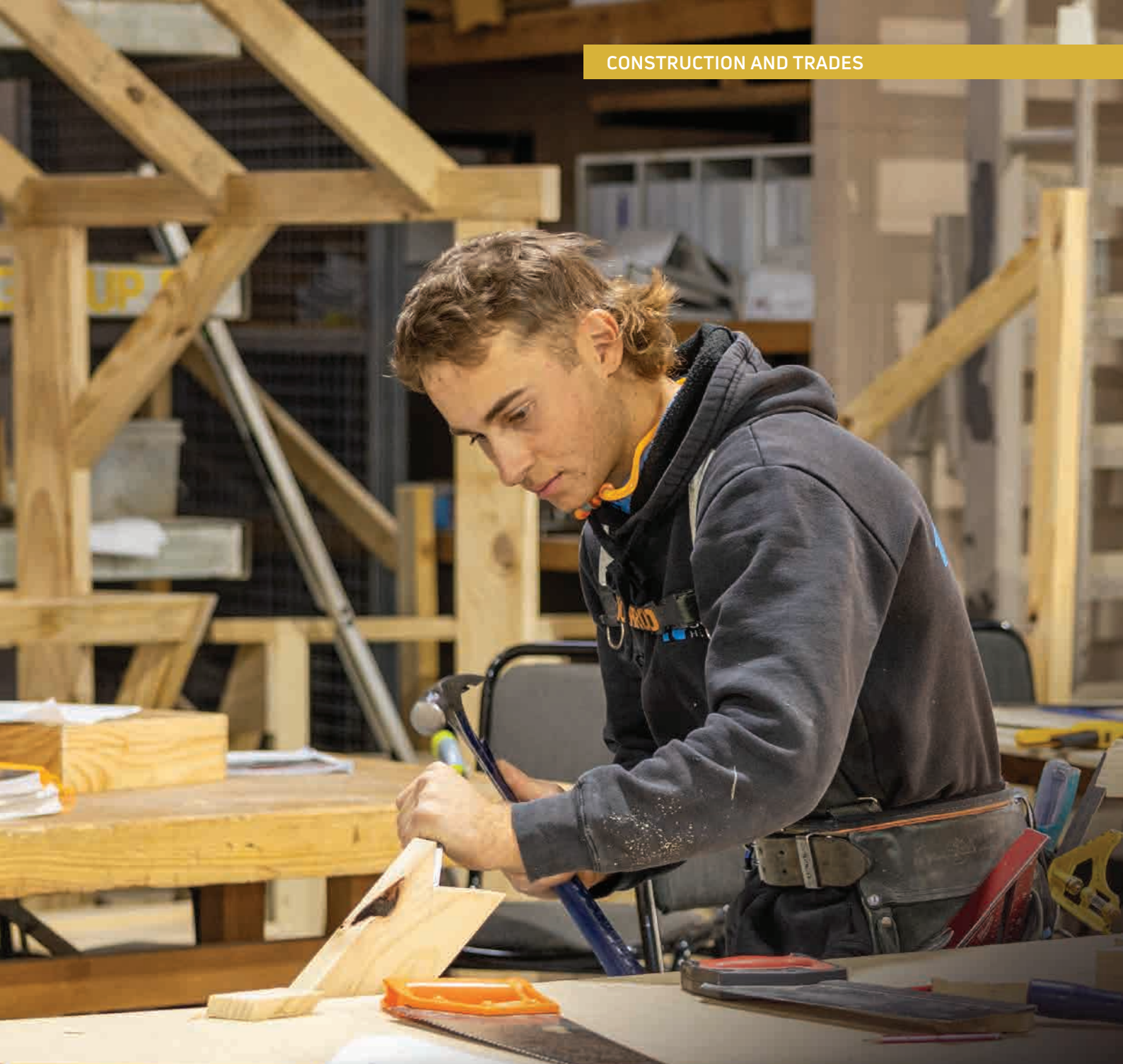
FREE TAFE

*Courses in this study area may be covered by FREE TAFE. Visit our website to check eligibility.

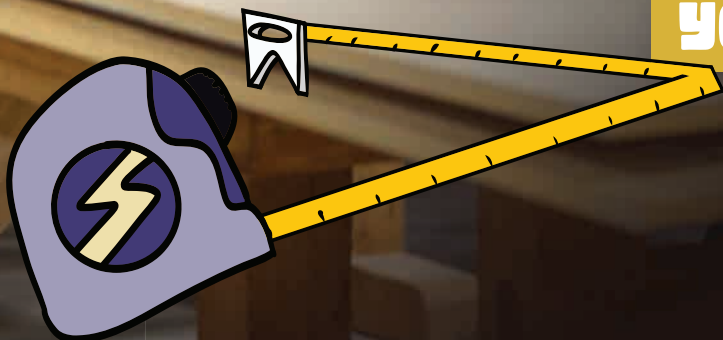
STUDY AREAS

- Carpentry
- Plumbing
- Electrotechnology
- Wall and Ceiling Lining





HAVING A TRADE CAN TAKE YOU ANYWHERE, AND WHATEVER YOUR PASSION, THE OPPORTUNITIES ARE ENDLESS.





DESIGN & VISUAL ARTS



Our visual arts courses will inspire your creativity and help you develop a broad range of skills and knowledge to start your artistic career. Being an artist can mean so many things.

You can work with communities, schools, at festivals, or teach workshops. You can make public artwork, sell pieces at markets and galleries, explore ideas, and use technology to bring your ideas to life. Our experienced teachers will give you the opportunity to explore a variety of different artistic mediums and techniques.

STUDY AREAS

- Design Fundamentals
- Visual Arts



**ARE YOU INSPIRED BY
CREATIVITY? IF SO, IT'S
TIME TO PUT YOUR
ARTISTIC SKILLS TO
WORK AND DESIGN
YOUR OWN CAREER.**





BUSINESS\$ AND ACCOUNTING

Strong business, accounting, and finance management form the backbone of any successful business.

STUDY AREAS

- Business
- Leadership and Management
- Accounting and Bookkeeping
- Work Health and Safety

Whether you're looking at entering the workforce and want to develop your business skills through a traineeship or want to build on your existing skills, we have a range of courses to suit your needs.

We can prepare you for a career in business and finance by giving you the necessary practical skills and knowledge for employment or further education.

**FREE
TAFE**

*Courses in this study area may be covered by FREE TAFE. Visit our website to check eligibility.





**ACROSS AUSTRALIA THERE
ARE MORE THAN TWO MILLION
REGISTERED BUSINESSES,
EACH OF WHICH HAS SPECIFIC
EMPLOYMENT NEEDS TO
SUPPORT ITS SPECIALISATION.**





DEARLY CHILDHOOD EDUCATION AND CARE

A qualification in early childhood education and care will prepare you for a rewarding career working with babies and children in a variety of settings including daycare and kindergarten.

Our experienced teachers will guide and support you through these programs, which are delivered in a variety of ways to fit in with your work or lifestyle.

Our Early Years courses will give you a professional qualification recognised throughout Australia, opening up diverse work opportunities.

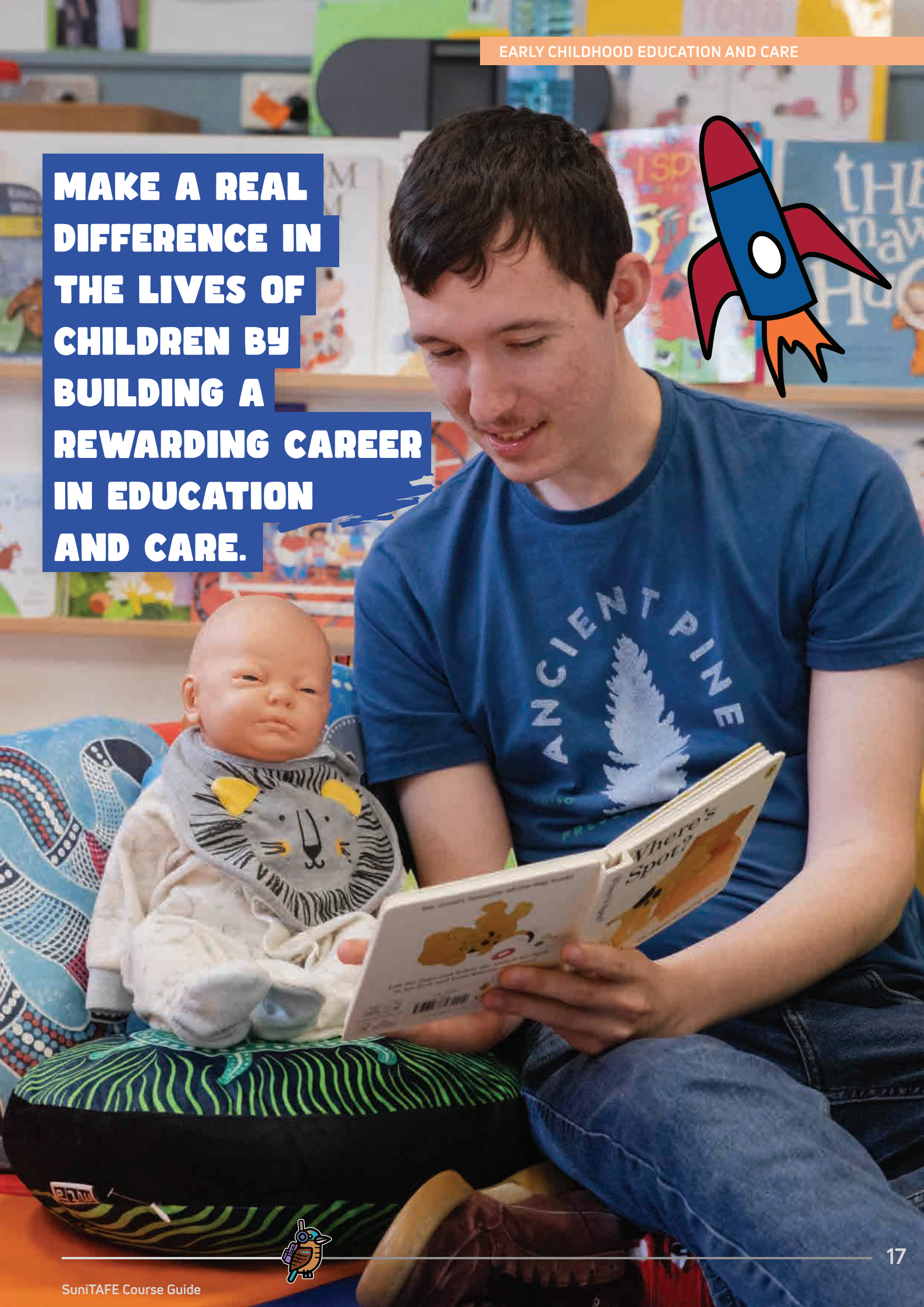
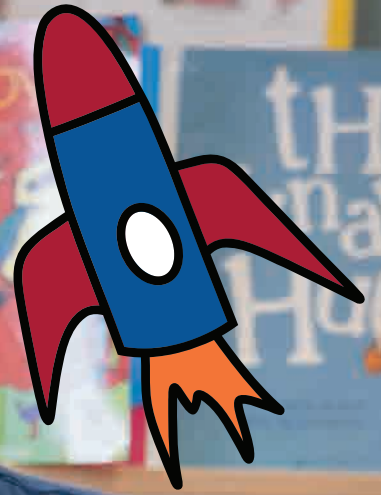
There are also pathways to university when you have completed a diploma course.

FREE TAFE

*Courses in this study area may be covered by FREE TAFE. Visit our website to check eligibility.



**MAKE A REAL
DIFFERENCE IN
THE LIVES OF
CHILDREN BY
BUILDING A
REWARDING CAREER
IN EDUCATION
AND CARE.**





ENGINEERING

STUDY AREAS

- Fabrication Trade
- Mechanical Trade (Fitting/Machining)

We offer courses at a range of levels to give you the skills and ability you'll need to get a start in engineering and manufacturing industries.

You'll learn specialist skills in areas including fitting, machining, sheet metal work, welding, and maintenance and service of mechanical equipment.

Qualifications can lead to employment in a number of industrial or manufacturing settings.



**LEARN TO SOLVE PROBLEMS AND
CREATE SOLUTIONS BY UNDERTAKING
AN ENGINEERING COURSE.**





ENGLISH LANGUAGE SKILLS

"Hello."

"Welcome to SuniTAFE."

A yellow pencil with a pink eraser and a sharpened lead tip, positioned horizontally below the word 'SKILLS'.

Our courses help you improve your speaking, pronunciation, listening, reading, and writing skills.

You can obtain qualifications from accredited course work to support your pathway into future vocational training or higher education courses.



WE OFFER A RANGE OF ENGLISH AS AN ADDITIONAL LANGUAGE (EAL) PROGRAMS TO SUPPORT YOUR PATHWAY TO FURTHER STUDY OR EMPLOYMENT.





**FREE
TAFE**

*Courses in this study area may be covered by FREE TAFE. Visit our website to check eligibility.



STUDY AREAS

- Hospitality
- Commercial Cookery
- Kitchen Management

Our fully-licensed SuniTASTE restaurant and production kitchens serve as practical classrooms so you can gain the skills you need to be job-ready.

Our expert trainers will encourage you to master traditional methods and try innovative techniques leaving you fully equipped to work in the industry.

Our trainers have strong links with local businesses, meaning you'll have opportunities to participate in local events.

Study modes include traineeships, apprenticeships, or classroom-based depending on the course you choose.

Our courses may include mandatory industry placement to meet course and industry requirements.

Please refer to the website for full placement requirements.



DO YOU HAVE A PASSION FOR WORKING IN THE FAST-PACED WORLD OF FOOD AND HOSPITALITY? A CAREER IN HOSPITALITY OR COMMERCIAL COOKERY CAN OFFER YOU ENDLESS OPPORTUNITIES.





HEAVY AUTOMOTIVE



SuniTAFE's heavy automotive courses attract students from across the state due to the high quality of training equipment and educators we have available to prepare you for the workforce.

You'll gain hands-on skills that can be applied across a range of areas, including agricultural equipment, trucks, tractors, buses, and much more.

Learn as an apprentice and gain a qualification while you earn money.

STUDY AREAS

- Heavy Commercial Vehicle Technology
- Agricultural Mechanical Technology
- Mobile Plant Technology



**KEEP OUR COMMUNITIES
MOVING FORWARD BY
JOINING THE HEAVY
AUTOMOTIVE AND
TRANSPORT INDUSTRY.**



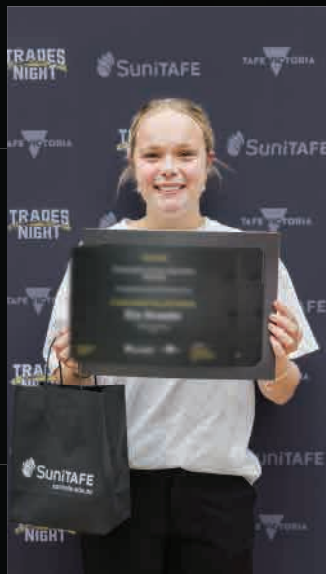
GRADUATION AND AWARDS CELEBRATION



Throughout your time at SuniTAFE, you'll have opportunities to celebrate your success at either our Graduation and Awards ceremonies or our Trades Nights.

Our Mildura and Swan Hill campuses host these events throughout the year. Keep an eye on our socials and website for information about events as they happen.







Beauty

At SuniTAFE, our Beauty trainers provide a well-rounded program, facilities, and training that is relevant to a range of beauty services and treatments.

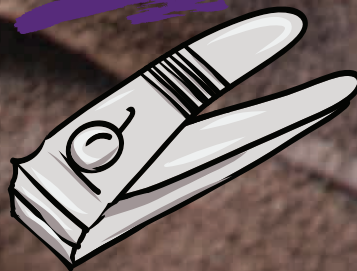
Our fully-functioning beauty salon, complete with industry-specific equipment and product ranges, provides you with modern facilities for a real-life industry experience with salon clientele.

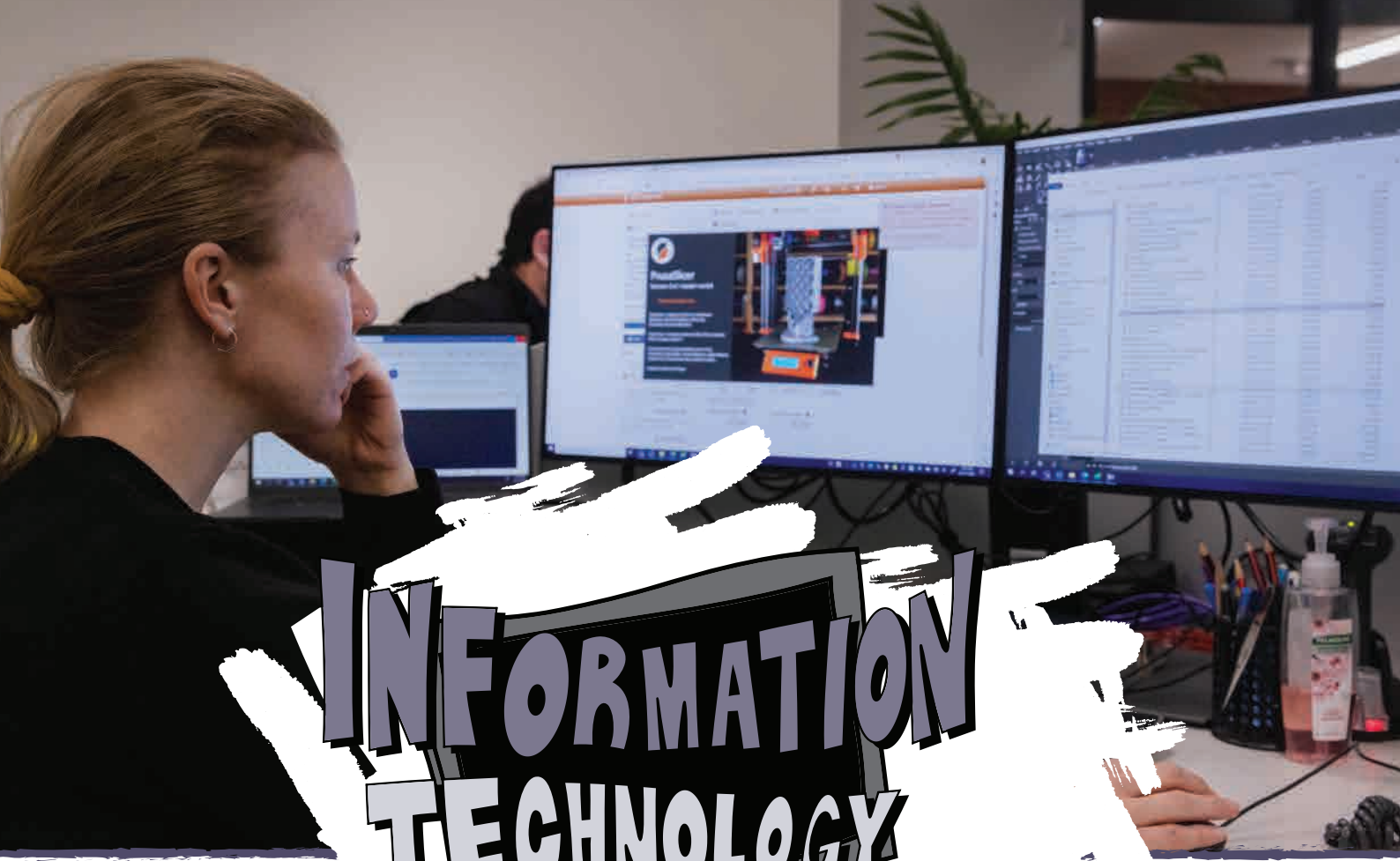
In our hands-on practical courses, our expert trainers will assist you in mastering your skills to meet the growing needs of the beauty and wellness industry, ensuring you are ready to extend your career or enter the beauty industry when you graduate.





A CAREER IN BEAUTY SERVICES CAN EMPOWER YOU TO MAKE OTHERS FEEL BETTER ABOUT THEMSELVES.





INFORMATION TECHNOLOGY

Careers in I.T. are changing and developing so quickly that half of the jobs 30 years from now will be in industries that don't currently exist.

No matter where future job trends emerge, IT is bound to be a central component. Our course provides you with a variety of skills and knowledge in the Information Technology field including entry level skills like network programming, systems development, and generalist IT support services.

FREE TAFE

*Courses in this study area may be covered by FREE TAFE. Visit our website to check eligibility.



**BE A PART OF THE FUTURE AND
KEEP UP TO DATE WITH THE
LATEST TRENDS IN TECHNOLOGY
WITH A CAREER IN I.T.**





NURSING HEALTH COMMUNITY SERVICES

**FREE
TAFE**

*Courses in this study area may be covered by FREE TAFE. Visit our website to check eligibility.

This broad and diverse study area prepares you for roles supporting individuals, families, and communities across a range of settings including hospitals, aged care, disability support, mental health, allied health, community services and specialist care.

Whether you are drawn to hands-on clinical nursing, community-based support, or allied health pathways, our courses provide the skills, confidence, and practical experience to help you succeed.

Our nursing courses equip students with the knowledge and capability to deliver high-quality, patient-centred care, supporting people at all stages of life. Graduates may work as enrolled nurses across a variety of healthcare environments and may also choose pathway into further study.





**WOULD YOU LIKE TO TURN
YOUR PASSION FOR CARING
FOR PEOPLE INTO A
MEANINGFUL AND
REWARDING CAREER?**





Health and community services courses focus on building strong foundations in care, communication, cultural safety, and professional practice, enabling graduates to support people with diverse needs and backgrounds. These qualifications are recognised nationally and open doors to a wide range of employment opportunities.

Our educators are closely connected with industry and bring real-world experience into the classroom, ensuring training remains relevant, practical, and aligned with workforce needs.

Our courses may include mandatory industry placement to meet course and industry requirements. Please refer to the website for full placement requirements.

STUDY AREAS

- Nursing
- Community Services
- Allied Health Assistance
- Individual Support



A healthcare worker with short reddish hair and glasses, wearing a red polo shirt, is leaning over a patient in a wheelchair. The patient is an elderly woman with short grey hair, wearing a grey patterned hospital gown. She is secured with grey and yellow safety straps. The worker is adjusting the straps. In the background, there is a white wall with a red circular sign that says 'A&E1 POWDER' and a fire extinguisher. A yellow ECG line graphic is overlaid on the bottom right of the text box.

**A CAREER IN NURSING,
HEALTH, AND COMMUNITY
SERVICES ALLOWS YOU TO
MAKE A REAL DIFFERENCE IN
PEOPLE'S LIVES WHILE
WORKING IN ONE OF
AUSTRALIA'S FASTEST
GROWING INDUSTRIES.**





TRAINING & ASSESSMENT

Our training and assessment course is designed to give you the skills to be a qualified trainer in the workplace or a vocational education teacher.

During the course, you will develop skills in areas such as facilitating group-based learning programs, facilitating in the workplace, developing learning programs, and much more.

With a qualification in training and assessment, you can gain employment in the Australian vocational education sector, have great job prospects, and inspire tomorrow's workforce.

FREE TAFE

*Courses in this study area may be covered by FREE TAFE. Visit our website to check eligibility.



THINKING ABOUT A CAREER CHANGE? USE YOUR EXPERIENCE TO START A CAREER IN TEACHING.





SENIOR SECONDARY

A decorative graphic featuring a pencil, a notepad with a smiling face, and a yellow pencil tip, positioned to the right of the 'SENIOR' text.

STUDY AREAS

- Victorian Certificate of Education Vocational Major
- Victorian Pathways Certificate

We offer two program options to complete your secondary schooling at SuniTAFE, VCE Vocational Major and Victorian Pathways Certificate, which give you the knowledge, confidence, and skills for further education or employment.

Rather than learning in a traditional classroom environment, you'll learn through a mix of on campus activities, excursions into the community, and completing electives from a vocation of your choice.

Our courses are run by engaging and supportive teaching staff who aim to improve your skills and give you the confidence to continue your learning journey in a safe, calm, and supported environment.



**COMPLETE YOUR SECONDARY
SCHOOLING IN A WELCOMING
AND SUPPORTIVE LEARNING
ENVIRONMENT.**





FOUNDATION STUDIES!

Our courses are designed for young people with evidence of a permanent cognitive and/or intellectual disability or who have participated in modified programs at secondary school due to a learning disability.

Our courses will help learners to build self-esteem and confidence with appropriate levels of support, for successful entry into the workforce at the end of the program.

Our courses may include mandatory industry placement to meet course and industry requirements. Please refer to the website for full placement requirements.

STUDY AREAS

- Transition Education
- Work Education



**WANT TO DEVELOP
PRACTICAL SKILLS,
KNOWLEDGE, AND CONFIDENCE
FOR EMPLOYMENT IN A
SUPPORTIVE ENVIRONMENT?
OUR FOUNDATIONS STUDIES
COURSES CAN HELP!**



FREE TAFE

Did you know that you may be eligible to complete some of our courses tuition free?

The Victorian Government's Free TAFE program offers you the opportunity to gain valuable skills and qualifications across various industries while paying no tuition fees.*

Our courses are designed to make high-priority vocational education and training accessible to everyone.

Join the more than 200,000 students in Victoria who have already upskilled with Free TAFE.

FREE TAFE STUDY AREAS:

- Accounting and Business
- Agriculture
- Automotive
- Community Services
- Early Childhood Education and Care
- Engineering
- Food and Hospitality
- Healthcare
- Horticulture
- Information Technology
- Training and Assessment

***While tuition fees are covered, please be aware that there may be additional costs for materials, student services, or amenities.**



SuniTAFE welcomes international students to an authentic Australian experience when they choose to study in Mildura, Victoria.

At SuniTAFE, our teachers are dedicated to sharing their knowledge and passion with students, and small class sizes mean personalised support through the learning journey. SuniTAFE teachers have industry experience in their chosen field and deliver courses meeting the needs of businesses in the region. Our competency-based training means there is a large practical component where you gain hands-on skills and your assessment is based on being able to complete the required tasks.

SuniTAFE students also have access to many free support services, including academic support, wellbeing services, and employment skills, as well as additional support from staff in the International Office.

INTERNATIONAL STUDY AREAS:

- Horticulture
- Automotive
- Health
- Early Years Education
- Accounting
- Food and Hospitality
- English Language Courses

INTERNATIONAL COURSES



SHORT COURSES

Update your skills and expand your horizons with a SuniTAFE short course.

Our range of short courses are practical and professional, designed to help you further your skills whilst you work or study. They can assist you in your current employment or help you to learn a new skill or pursue an interest.

STUDY AREAS:

- Automotive
- Engineering
- OHS
- Food and Hospitality
- Horticulture and Agriculture



VDSS

VET Delivered to Secondary Students

If you're a high school student looking to get a head start in your future career, the VET Delivered to Secondary Students (VDSS) program is for you.

VDSS enables secondary school students to study a TAFE subject as part of their secondary schooling. This means that they receive hands-on skills in a nationally-recognised qualification while also contributing towards their secondary school completion certificate.

The VDSS programs run over one year or two years, with students starting their program in years 10 or 11.

As a VDSS student, you'll attend campus once a week and, in some cases, this is supported by work placement or structured workplace learning to further enhance skills and provide opportunities for employment.

Please note: You need to be at least 15 years old and in Year 10 or 11 to join.

STUDY AREAS:

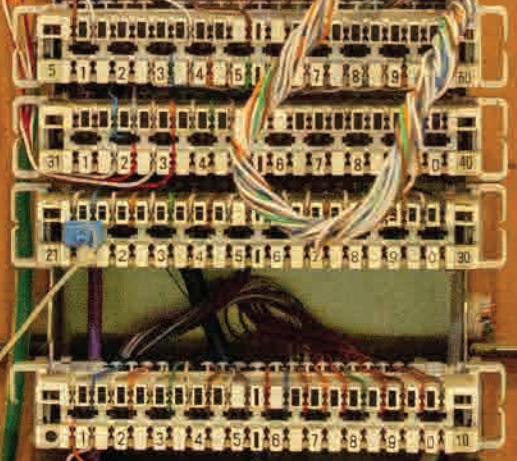
- Accounting
- Allied Health
- Automotive
- Beauty
- Carpentry
- Creative Arts
- Community Services
- Early Childhood Education
- Engineering
- Electrical
- Food and Hospitality
- Horticulture
- Information Technology
- Plumbing

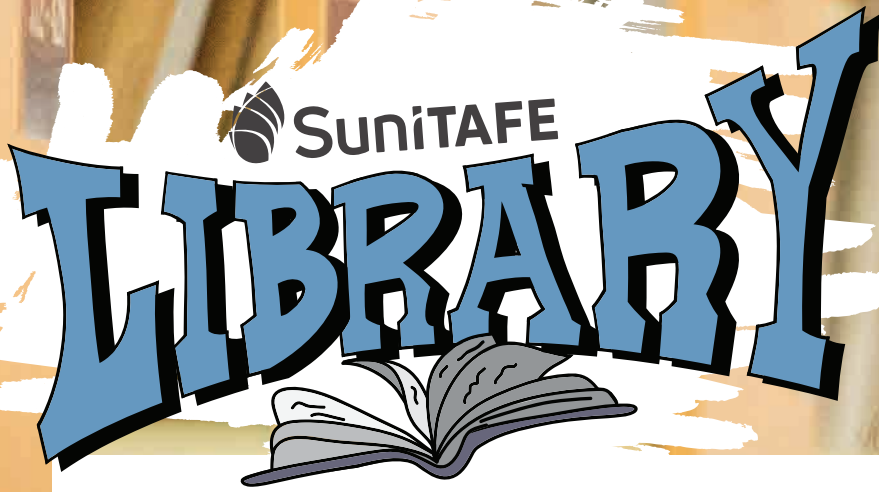
DISTRIBUTOR



MODULAR
OUTLET

T.R.C.
LINK
BAR





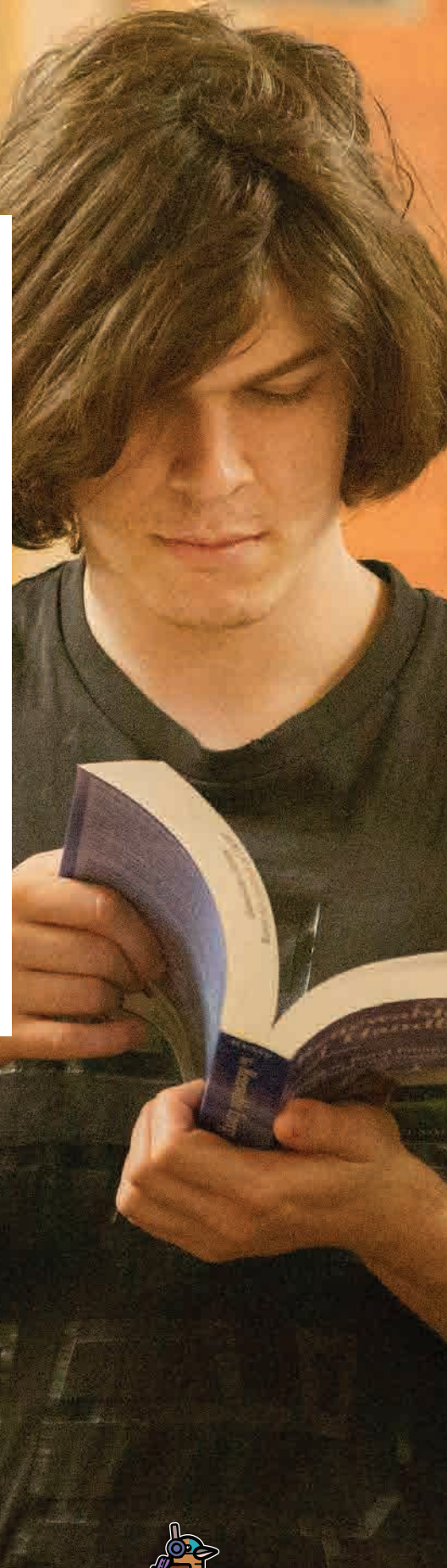
SuniTAFE LIBRARY

The SuniTAFE Library and staff are here to help you from when you start your qualification, through to when you graduate, and beyond.

The Mildura campus Gambetta Library and the Swan Hill Learning Commons offer a wide range of products and services that will keep you well-informed and always learning throughout your time at SuniTAFE.

We can offer:

- Physical resources, including educational texts and casual reading
- Online resources
- Laptop loans and computer lab access
- Assistance accessing systems and general IT troubleshooting
- Room bookings
- Printing, photocopying, laminating, spiral binding
- Much, much more



We're here to help!

As a SuniTAFE student, you'll have access to a range of free support services to help you succeed during your studies.

Our comprehensive range of services encompasses disability support, student wellbeing, academic and I.T. assistance, and referral services tailored to meet the unique needs of each individual.

SERVICES WE OFFER:

- Wellbeing and Support Services
- Personal wellbeing
- Counselling (individual and group)
- Disability support
- Managing stress and time
- Support for youth and equity groups
- Access to health services
- Guidance on pathways and engagement
- Academic support
- Study and learning support
- Digital literacy
- Managing conflict
- Conflict resolution
- Handling complaints and appeals

STUDENT SUPPORT SERVICES



FIRST NATIONS STUDENT SUPPORT

SuniTAFE's Dulka Yuppata and Telkaya Centres provide support and assistance to all First Nations learners enrolled in a SuniTAFE course.

The centres also provide a gathering space for First Nations students and the community, and partner with organisations to provide leadership in educational, cultural, and social activities.

Our dedicated team of Koorie Student Support Officers are available to support students in all areas of learning including:

- Abstudy
- Time management
- Scholarship information
- Essay writing tutors
- Course information
- Assistance with award applications
- Referrals to support services

The Dulka Yuppata First Nations Cultural Support Centre is located on our Mildura campus.

The Telkaya First Nations Cultural Support Centre is located on our Swan Hill campus.



Still not sure what to study?

SKILLS AND JOBS CENTRES

Our Skills and Jobs Centre is here to help!

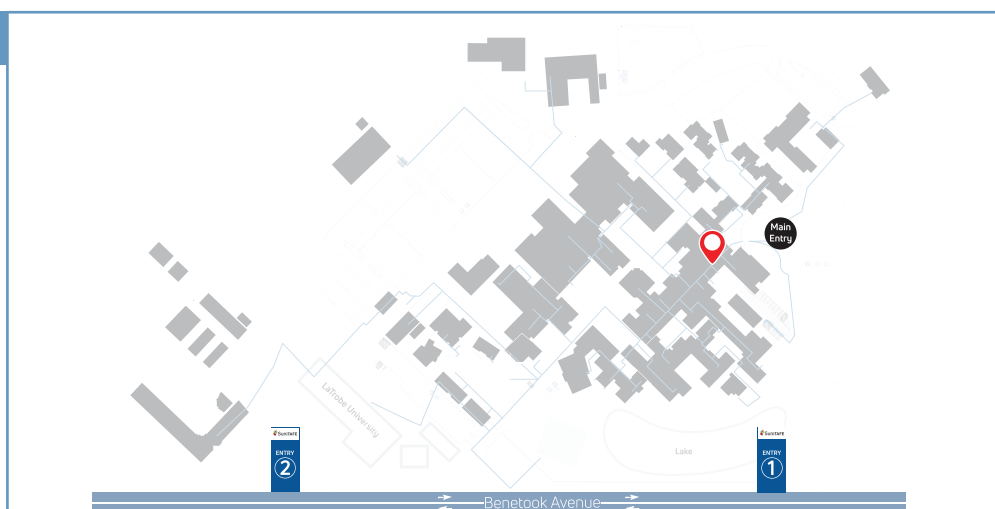
Located at our Mildura and Swan Hill campuses, our Skills and Jobs Centres provide independent, cost-free advice on study options, career planning, job seeking, skills and recognition, and more.

Contact our Skills and Jobs Centre for:

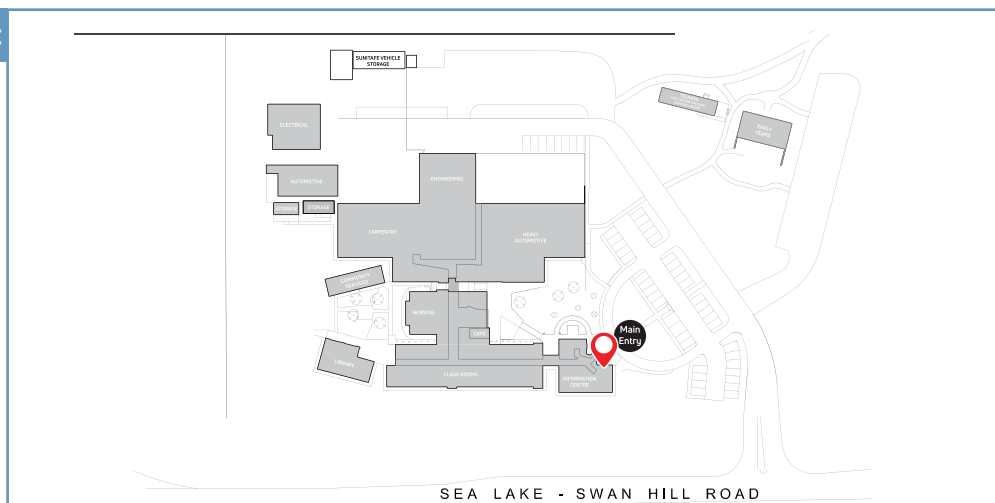
- Resume and cover letter writing assistance
- Job interview skills and practice
- Study options information and advice
- Career counselling
- Referrals to appropriate local services
- Much more.

Visit our website to get in touch with the friendly team today.

Mildura Campus:



Swan Hill Campus:



Are you ready to apply?

Here's what comes next:

Step 1: Put in your application

Congratulations! Choosing the course you want to study is the first step in your exciting new educational journey.

Once you've chosen a course, visit the course's page on our website, click the APPLY NOW button, complete the mandatory fields, and submit.

Step 2: Complete your paperwork

After applying online, a friendly Enrolment Advisor will be in contact to provide you with details of the next requirements for enrolment.

You'll be required to complete a Pre-Training Review as part of this step, which will determine your suitability for the course.

Most courses also require that you undertake a Language Literacy and Numeracy Assessment, and you may also be required to attend an interview with the course's teacher.

During this step, you'll also need to provide supporting identification documents.

Don't stress! Your Enrolment Advisor will ensure you know exactly what you need to do.

Step 3: Finalise your enrolment

Once you've completed the required paperwork and provided the necessary documents, an Enrolment Advisor will be in contact again to let you know when you have been deemed suitable for the course.

You'll then be provided with all the details you need to finalise your enrolment!

Step 4: Celebrate!

You did it! You're successfully enrolled and ready to get started in your brand new course.

You'll be provided with details on how to access SuniTAFE systems and what you'll need for a successful educational journey ahead.





COURSE GUIDE

Mildura Campus

PO Box 1904, 453 Benetook
Avenue, Mildura VIC 3502
Telephone: 03 5022 3666

Swan Hill Campus

64 Sea Lake – Swan Hill Road
Swan Hill Victoria 3585
Telephone: (03) 5036 0220

SuniTAFE SMART Farm

161 Dairtnunk Avenue
Irymple VIC 3498
Telephone: 03 5022 3666

Relationships | Integrity | Accountable | Improvement

